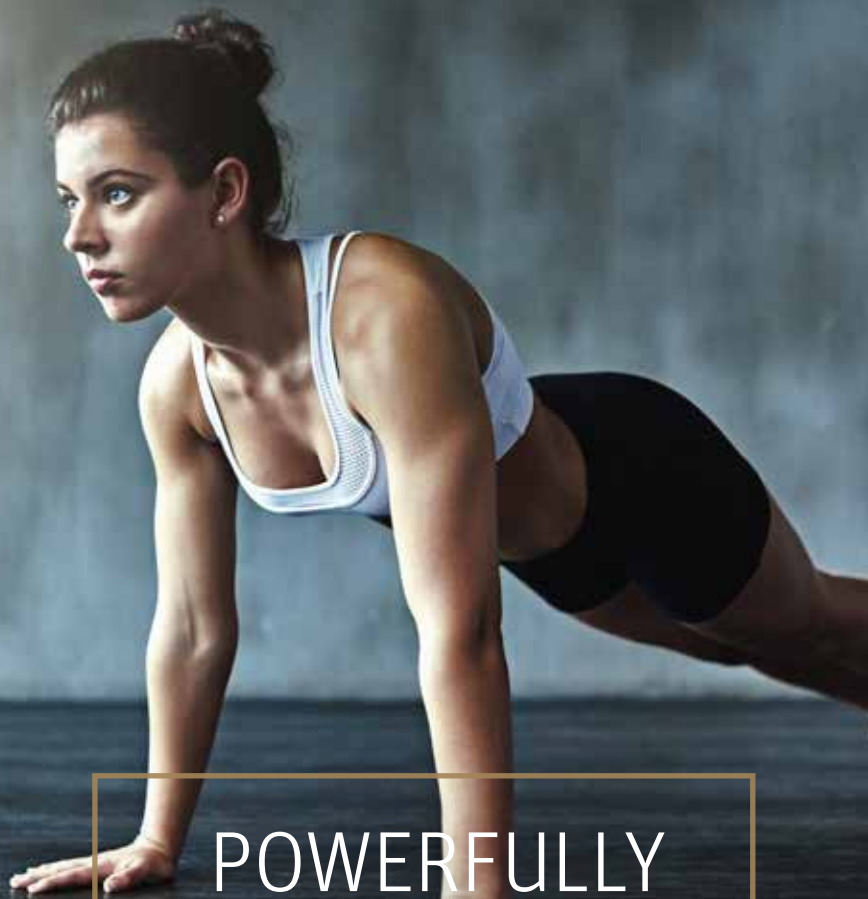


End customer
alterra SW



POWERFULLY
COMPACT

Brine/water heat pump
Indoor installation
alterra **SW**

the better way to heat

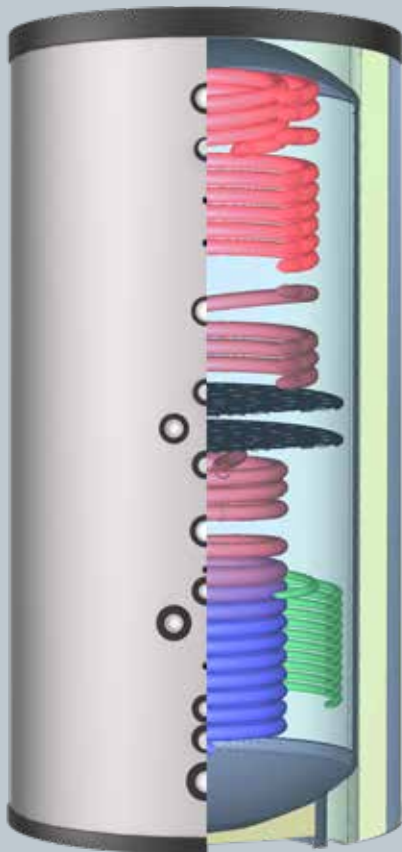
THE POWERFUL

The brine/water heat pump SW from alpha innotec is a cost-effective start to efficient and sustainable heating with heat pumps and you still don't have to make any concessions in performance and flexibility. Due to the many possible combinations with, for example, photovoltaic or solar systems, the SW offers many possibilities with maximum comfort: Heating and domestic hot water preparation in one compact device – whether in a new building or in the course of renovation, in a single-family or two-family house.

Thanks to its elegant and modern design and very quiet operation, the heat pump can also be easily installed in the living area. The brine/water heat pump SW is particularly suitable for replacing an existing heat pump system.

All advantages at a glance

- + Energy-efficient, low consumption costs
- + Heating and preparing domestic hot water (cooling optionally via cooling package KSE)
- + Cost-effective heat pump that meets all requirements
- + Combination with photovoltaic and solar system possible
- + With alpha app and alpha web very comfortable adjustable – worldwide via smartphone
- + Made in Germany



ONE STORAGE – MANY OPPORTUNITIES

(heating, preparation of domestic hot water and, if necessary, integration of further heat generators)

The multi-function storage (MFS 600S, MFS 830S, MFS 1000S) is designed exactly to meet the requirements of a heat pump heating and is ideal if it is to be combined with other heat generators (solar, photovoltaic, stove with water pockets, ...). Because buffer and hot water preparation are integrated in one unit, more space is available in the boiler room and quick and easy installation is possible.

The domestic hot water is produced using the hygienic continuous flow principle.

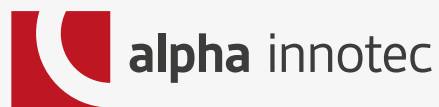
Brine/water heat pump
alterra **SW**



TECHNICAL DATA

Type	Item num.	Performance data			Hermetically sealed	Refrigerant Filling quantity [kg]	Dimensions W x D x H [mm]	Weight		Energy efficiency class	
		Heating capacity BO/W35 [kW]	COP BO/W35 partial load	CO ₂ equivalent [t CO ₂]				total	without module box	Combination with controller (A ⁺⁺⁺ bis G)	Space heating 35 °C (A ⁺⁺⁺ bis D)
SW 42H3	10070041	4,7	4,70	2,2	✓	1,05	598 x 640 x 850	135	45	A ⁺⁺	A ⁺⁺⁺
SW 82H3	10070241	7,7	4,90	3,6	✓	1,72	598 x 640 x 850	155	45	A ⁺⁺	A ⁺⁺⁺
SW 102H3	10070342	9,3	5,05	4,1	✓	1,98	598 x 640 x 850	160	45	A ⁺⁺	A ⁺⁺⁺
SW 122H3	10070442	12,2	5,00	4,7	✓	2,25	598 x 640 x 850	165	45	A ⁺⁺	A ⁺⁺⁺
SW 142H3	10070542	13,5	5,08	5,0	✓	2,38	598 x 640 x 850	175	45	A ⁺⁺	A ⁺⁺⁺
SW 172H3	10070642	16,9	4,93	5,5	✓	2,65	598 x 640 x 850	180	45	A ⁺⁺⁺	A ⁺⁺⁺
SW 192H3	10070742	18,6	4,87	5,8	✓	2,80	598 x 640 x 850	185	45	A ⁺⁺	A ⁺⁺⁺
SW 232H3	10074642	22,4	4,95	6,7	✓	3,20	598 x 653 x 1500	207	65	A ⁺⁺	A ⁺⁺⁺
SW 262H3	10074742	25,6	4,92	6,9	✓	3,30	598 x 653 x 1500	212	65	A ⁺⁺	A ⁺⁺⁺
SW 302H3	10074842	29,6	4,88	7,2	✓	3,70	598 x 653 x 1500	219	65	A ⁺⁺	A ⁺⁺⁺

Data according to EN 14511 | Filled with refrigerant R410A, GWP 2.088



ait-deutschland GmbH
Industriestraße 3
95359 Kasendorf
Germany

T +49 9228 / 9906-0
F +49 9228 / 9906-189
E info@alpha-innotec.de

www.alpha-innotec.de